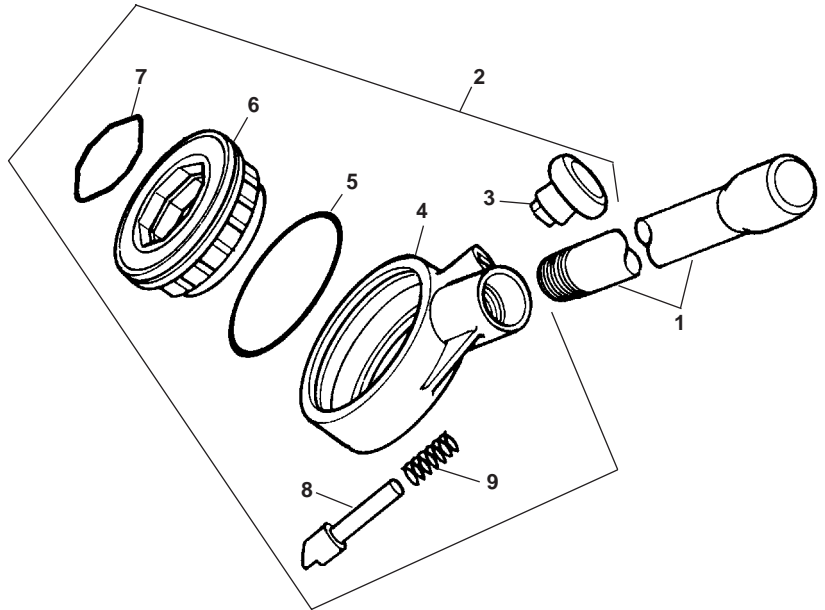


RIDGID 11-R Ratchet Threader Parts

R-200/11-R Ratchet Assembly

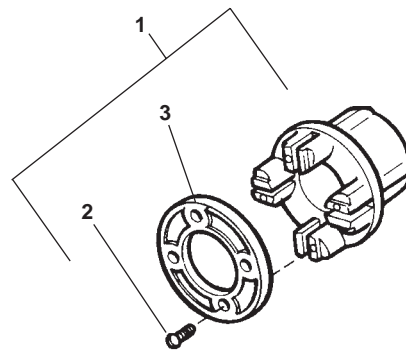
NOTE: Order parts by Catalog Number only.
DO NOT order by Reference Number.

Ref. No.	Catalog No.	Description
—	37777	Ratchet & Handle Assembly
1	38585	Handle
2	39177	Ratchet Assembly
3	39197	Knob
4	39182	Ratchet Housing
5	39172	Spring - Housing
6	39187	Ratchet Ring
7	38830	Spring - Ratchet Ring
8	39192	Pawl
9	39202	Pawl Spring

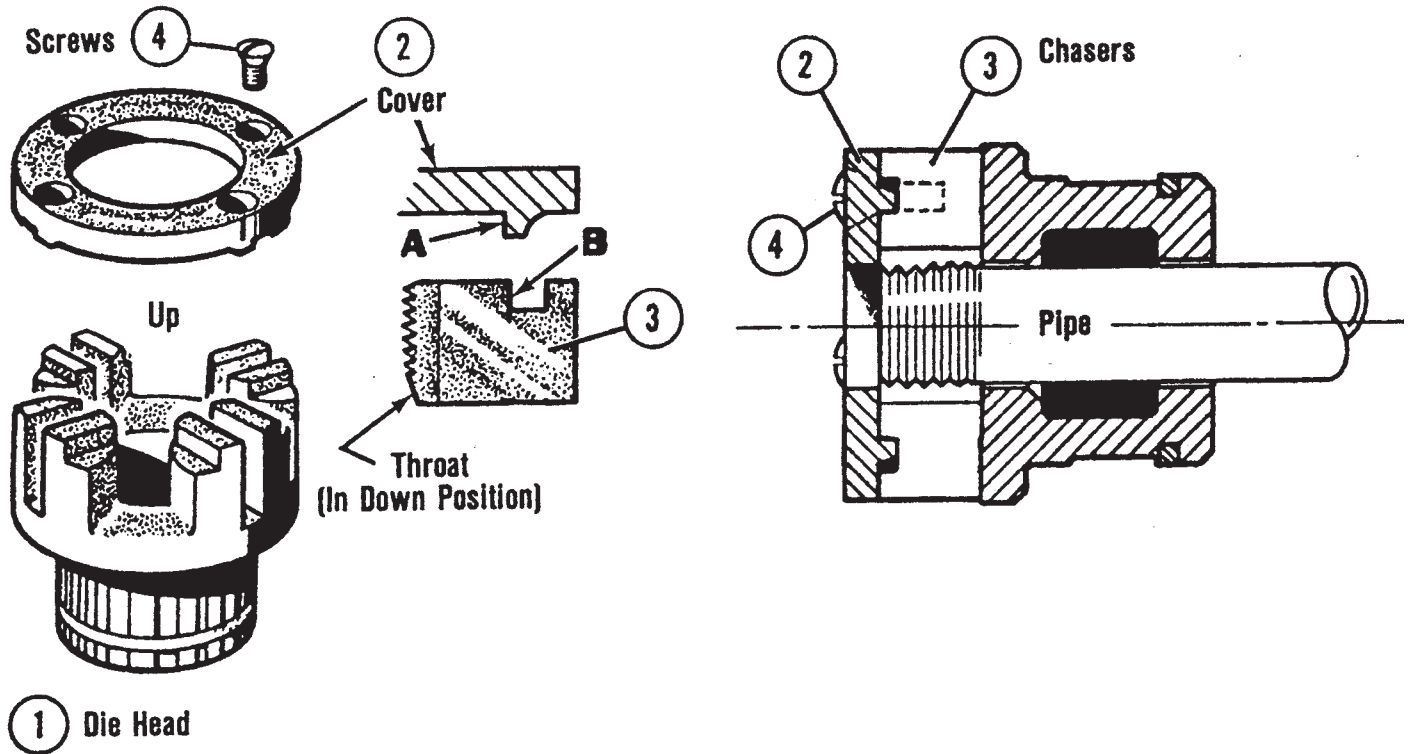


Die Head Assembly

Ref. No.	Description	11-R Catalog No.
1	Die Head w/Cover Plate & Screws	1/8"
		1/4"
		3/8"
		1/2"
		3/4"
		1" NPT/NPSM
		1" BSPT/BSPP
		1 1/4" NPT/NPSM
		1 1/4" BSPT/BSPP
		1 1/2"
		2
		16mm ISO
		20mm ISO
		25mm ISO
		32mm ISO
40mm ISO		
2	Cover Plate Screw (4)	1/8"-1/4"
		3/8"-1 1/4"
		1 1/2"-2"
		16mm - 40mm
3	Cover Plate	1/8"
		1/4"
		3/8"
		1/2"
		3/4"
		1"
		1 1/4"
		1 1/2"
		2



RIDGID Instructions for Inserting Chasers in Drop Head Threaders



To properly insert new chasers in RIDGID Drop Head Threaders, read the following instructions carefully.

1. Place the Die Head in the position shown at left above.
2. Remove Screws (4), Cover (2), and old Chasers.
3. Insert new Chasers, throats down as shown, into Die Head slots. Numbers on Chasers must agree with those next to Die Head slots.

4. Replace Cover (2), and Screws (4). Tighten the Screws lightly.
5. Slide Die Head on already threaded nipple or pipe, until Chasers begin to thread. This forces Chasers outward against Lugs on Cover Plate. Tighten the 4 Screws securely. The Chasers are set for accurate threading by bringing **B** of Chasers against **A** of the Cover. This is the **Key** to inserting the Chasers properly.